

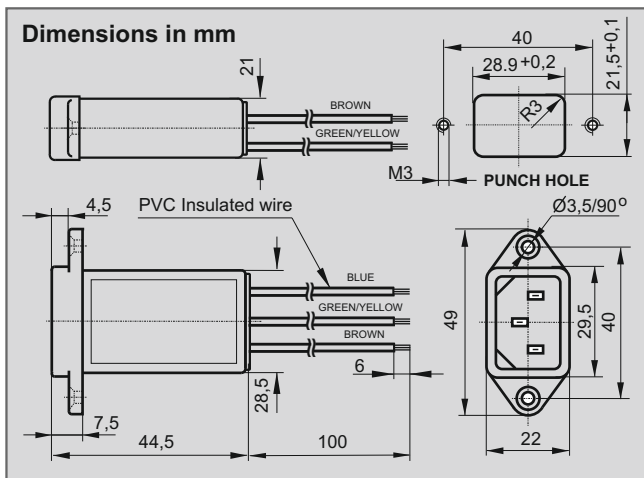
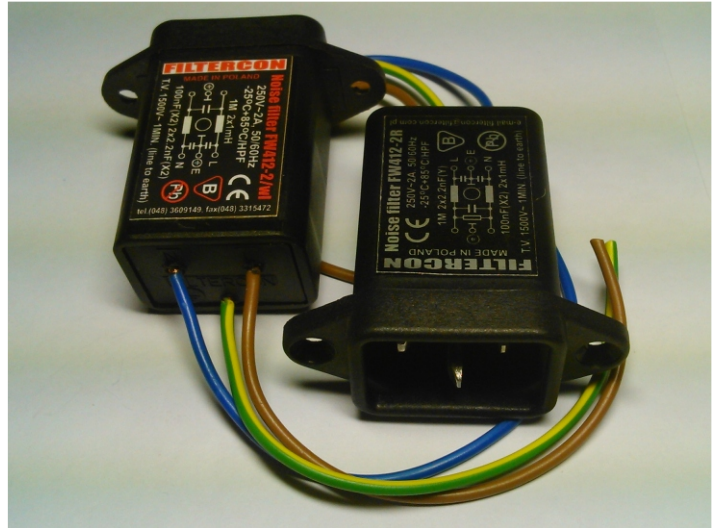
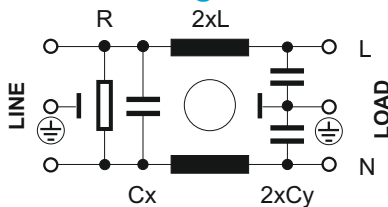


Power Entry Modules FW/wl Series

Bolt-in Wire Leads Applications

- Digital equipment
- Personal computers and peripherals
- Measuring instruments
- Monitor and display units

Circuit Diagram

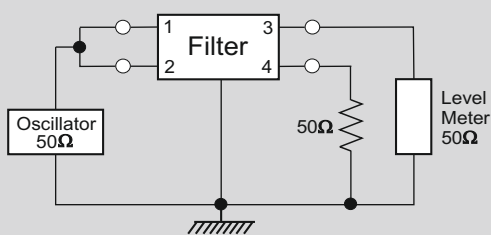


Leakage Current: (250V AC) 0,5 mA max.
Operating Temperature: -25°C to +85°C

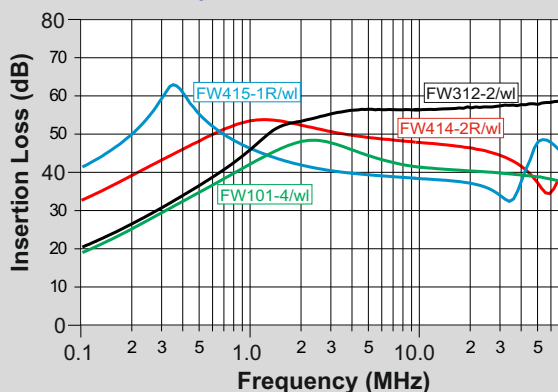
Model	U (V)	I (A)	Cx(nF)	Cy(nF)	L(mH)
FW105-1/wl	250V AC	1	10	1	4
FW315-1/wl			47		
FW415-1R/wl			100		
FW615-1R/wl			220		
FW104-2/wl	250V AC	2	10	1	2
FW314-2/wl			47		
FW414-2R/wl			100		
FW614-2R/wl			220		
FW101-4/wl	250V AC	4	10	1	1
FW311-4/wl			47		
FW411-4R/wl			100		
FW611-4R/wl			220		

Bleeder Resistor (R=1M) is available only for Cx>100nF

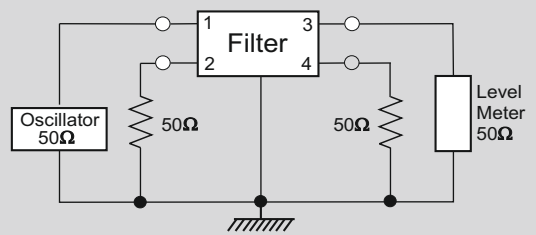
Asymmetrical



FWxxx-I/wl



Symmetrical



FWxxx-I/wl

