



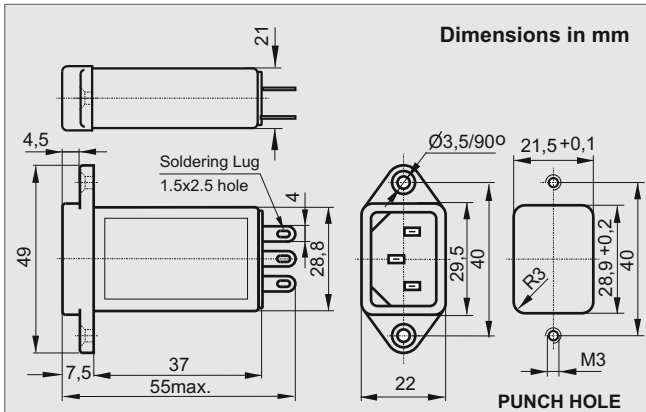
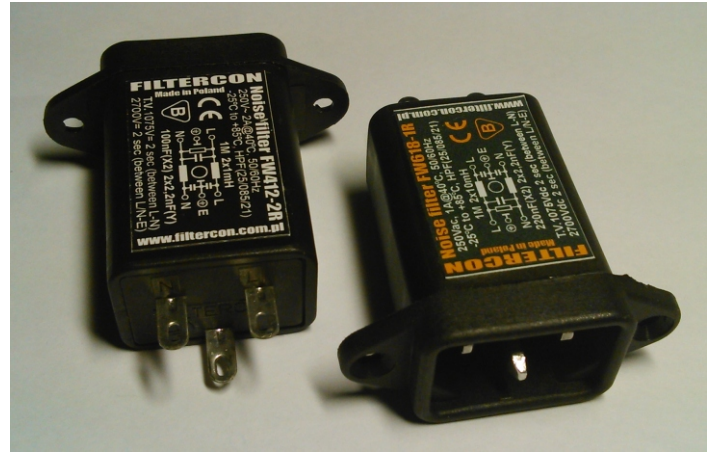
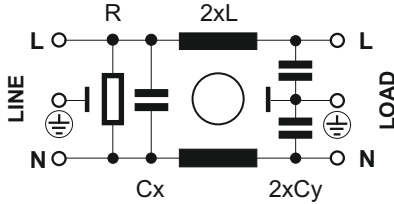
Power Entry Modules FW Series

Bolt-in Rear Terminals

Applications

- Digital equipment
- Personal computers and peripherals
- Measuring instruments
- Monitor and display units

Circuit Diagram

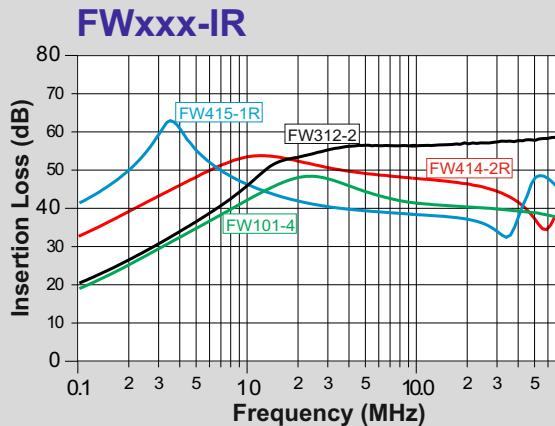
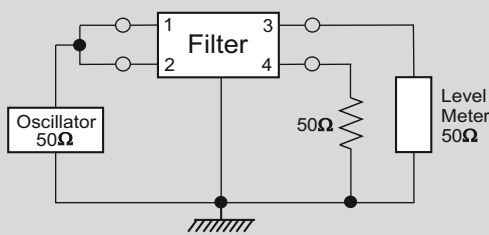


Leakage Current: (250V AC) 0,5 mA max.
Operating Temperature: -25°C to +85°C

Model	U (V)	I (A)	Cx(nF)	Cy(nF)	L(mH)
FW315-1	250V AC	1	47	2,2	4
FW415-1R			100		
FW615-1R			220		
FW618-1R			220		
FW314-2	250V AC	2	47	2,2	2
FW414-2R			100		
FW614-2R			220		
FW101-4	250V AC	4	10	1	1
FW311-4			47		
FW411-4R			100		
FW611-4R			220		

Bleeder Resistor (R=1M) is available only for Cx>100nF

Asymmetrical



Symmetrical

