



Sieciowe filtry przeciwzakłóceńowe do druku serii FM (obudowa metalowa)



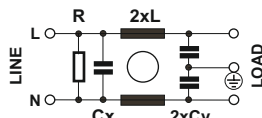
Miniaturowe filtry do obwodów drukowanych

Zastosowanie:

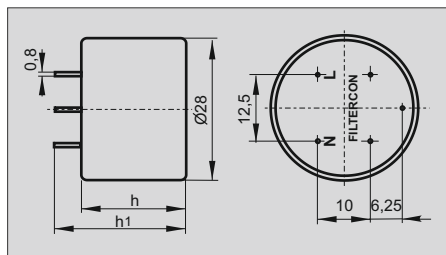
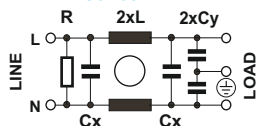
- Komputery i urządzenia peryferyjne
- Sprzęt pomiarowy i aparatura medyczna
- Monitory telewizyjne i komputerowe
- Elektroniczne urządzenia powszechnego użytku

Schemat elektryczny

FMxxx Series

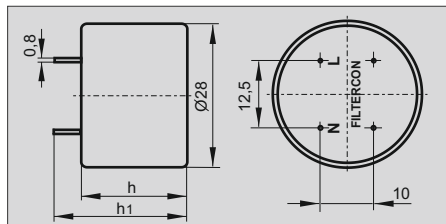
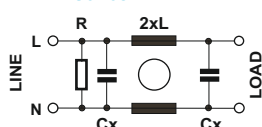


1FMxxx Series



Schemat elektryczny

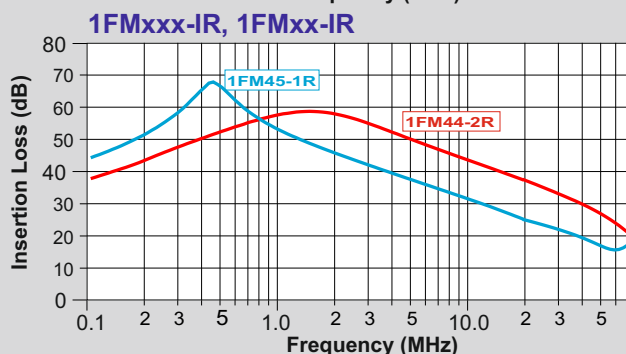
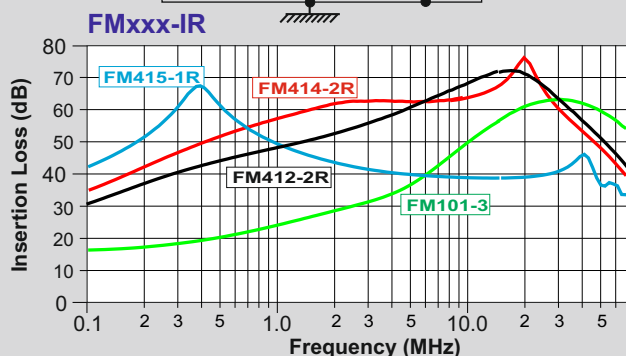
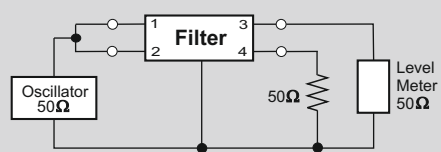
1FMxx Series



Model	U (V)	I (A)	Cx(nF)	Cy(nF)	L(mH)
FM105-1	250V AC	1	10	1	4
FM315-1, 1FM315-1			47	2,2	
FM415-1R, 1FM415-1R			100		
FM615-1R, 1FM615-1R			220		
FM104-2	250V AC	2	10	1	2
FM314-2, 1FM314-2			47	2,2	
FM414-2R, 1FM414-2R			100		
FM614-2R, 1FM614-2R			220		
FM101-3	250V AC	3	10	1	1
FM312-3, 1FM312-3			47	2,2	
FM412-3R, 1FM412-3R			100		
FM311-4, 1FM311-4	250V AC	4	47	2,2	1
FM411-4R, 1FM411-4R			100		
FM411-5R, 1FM411-5R			5		

Model	U (V)	I (A)	Cx(nF)	L(mH)
1FM35-1	250V AC	1	47	4
1FM45-1R			100	
1FM65-1R			220	
1FM34-2	250V AC	2	47	2
1FM44-2R			100	
1FM64-2R			220	
1FM32-4	250V AC	4	47	1
1FM42-4R			100	
1FM62-4R			220	
1FM31-5	250V AC	5	47	0,5
1FM41-5R			100	
1FM61-5R			220	

Asymmetrical



Symmetrical

